

Models DPC-100 & DPC-120

Digital Communications Accessories

Protocol: Profibus DP (Distributed Process)

Designed for positioning control of motorized valves, it also serves as the vital intelligence link between PLC's in the control room and the actuators in the field. Up to 126 actuated valves can be controlled on a single network. The automatic calibration feature requires no loop tuning. All operating parameters can be set from the communications center over the bus.



DPC-120



DPC-100

C O S T R E D U C I N G F E A T U R E S

- Two wire control reduces installation and start up time compared to multi-cable wiring.
- Automatic calibration cuts down on start up time.
- No deadband eliminates need for field adjustments

S T A N D A R D F E A T U R E S

- On line configuration of 36 operational parameters using generic Profibus software.
- Low power consumption; does not require ventilation.
- Electronic overload protection with built-in current monitoring.
- LED indicators for input, outputs and communication channel.
- Automatic calibration with local pushbutton or remote command.
- Dynamic breaking eliminates overshooting.



Specifications

Power Supply:

DPC-100: 24/12VDC
 DPC-120: 120 VAC

Communication Interface:

Profibus Standard

Protocol:

Profibus DP (Distributed Process)

Feedback:

Potentiometer 1000 Ohms/Optical Encoder

Position input accuracy:

1.0% full scale standard, Maximum 0.1%

Temperature:

-40 to 70C (-40 to 158°F)

Relative Humidity:

0 to 90% non-condensing

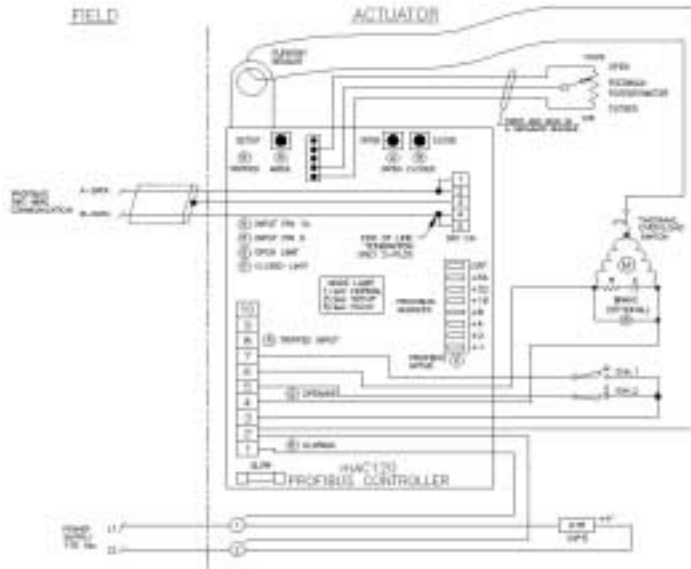
Dimensions:

DPC-100: 4.0 x 1.5 x 2.5 IN
 DPC-120: 4.25 x 1.75 x 3.75 IN

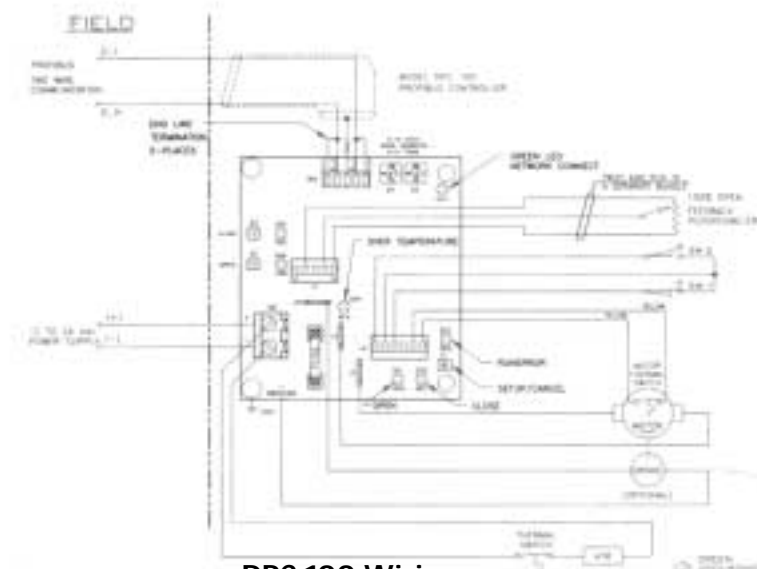
The DPC-100 and DPC-120 cards are mounted inside the RCS and Andco actuator enclosures. Actuators equipped with these accessories can communicate directly with most PLC's currently available. They become ideally suited to operate large numbers of valves or other types of rotating equipment. Typical installations would include: oil and gas fields, offshore platforms, water treatment facilities, Dry material handling & storage or food and beverage processing.

In addition to positioning the valve, the DPC-100 & DPC-120 provides the following status and fault signals:

- | | |
|--------------------------|---|
| Valve full closed | Valve opening or closing manually |
| Valve full open | Valve jammed/current limiting |
| Percentage of open | Motor still energized after stop or end of travel |
| Valve seeking position | Controller self-test (detects problems) |
| Motor running | Communication failure |
| Valve closing | Average running current load |
| Valve opening | Peak running current load |
| Motor thermostat tripped | Idle current load |
| Incomplete travel | |



DPC-120 Wiring



DPC-100 Wiring



Copyright © 1999 by Texsteam Operations.
 All rights reserved. Patents applied. Printed in U.S.A.
 Reproduction in whole or in part is prohibited by law.



1020 Rankin Rd., Houston, TX 77073
 P.O. Box 60706, Houston, TX 77205
 TEL: (281) 443-7000
 FAX: (281) 443-6308
 FAX: (281) 443-4802
 TOLL FREE: (800) 945-9898